

GP.36

PRODUCT DESCRIPTION

GP.36 is a paste adhesive supplied in cartridge, gunnable.

PRODUCT CHARACTERISTICS

GP.36 is suitable for bonding wood, metal, masonry and plastics.

Fast setting and with high gap-filling capacities, it is suitable for bonding irregular substrates.

It can be applied one way and on limited parts of the surfaces to be bonded.

TYPICAL APPLICATIONS (professional use)

- For bonding wood panels, plastic laminate, plates, uPVC, polyurethane foam to wood, plaster, concrete, bricks and stones.
- For fixing threshold, steps, skirting boards, wooden staff bead frames, and wooden staff angles.
- For bonding insulated panels.



LIMITATIONS

- Not suitable for polystyrene foam.

TECHNICAL DATA

Composition:	polychloroprene rubber, synthetic resins and fillers in a blend of organic solvents
Consistency:	highly viscous paste
Mode of setting:	solvent release
Solvent blend:	ketones, aliphatic hydrocarbons
Specific gravity at 20°C:	1 - 1,02
Application temperature:	+5°C / +35°C
Solid content:	52 - 54 %
Viscosity (extrusion rate):	30 - 50 g/min. (a 20° - 26°C)*
Service temperature:	-10° / +70°C
Shear strength (beach-beach):	300 N/cm ² 24 hours 500 N/cm ² 10 days

* Value valid as product supply specification upon leaving the factory.

METHOD OF USE

Surface preparation: surfaces must be clean, dry and free from dust and grease.

Application: for bonding wide surfaces apply with the gun beads of approximately 6 mm. diameter at a distance between 20 - 40 cm. and along the perimeter, onto only one part.

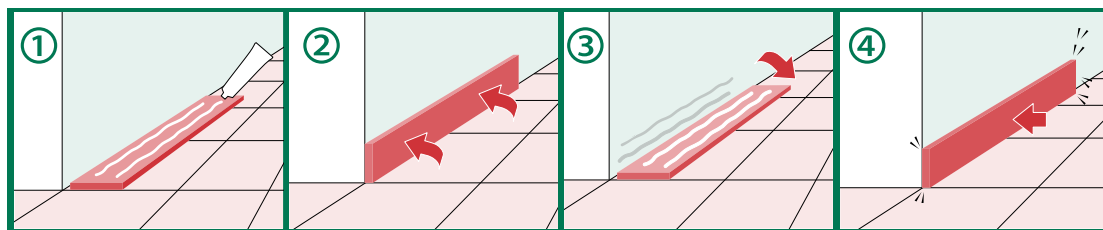
Section and distance between the beads must be proportional to the irregularity of the surface and to the bonding stress.

Join the parts within 5 minutes with an adequate pressure.



GP.36

When high greenstrength is required, it is necessary to transfer part of the adhesive onto the non spreaded part, joining the materials temporarily and then separating (see instructions).



Allow to dry 10 minutes maximum, then the parts can be joined permanently with an adequate pressure.

Setting time: the adhesive sets immediately. Maximum bond strength is reached after 10 days from the adhesive application.

Consumption: 150 - 250 gr/m².

SAFETY AND HEALTH

See Safety Data Sheet.

INFORMAZIONI DI STOCCAGGIO

12 months for the product stored in the original sealed pack at a temperature range from + 5°C to + 25°C.

PACKAGING

Code	Packaging	Unit
1002775	cartridge 310 ml.	24

