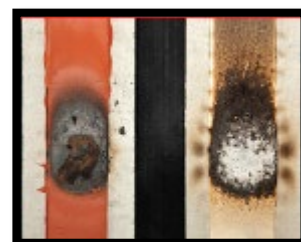
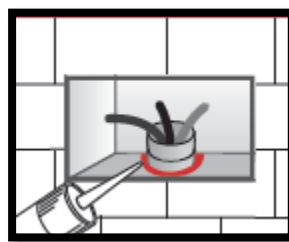
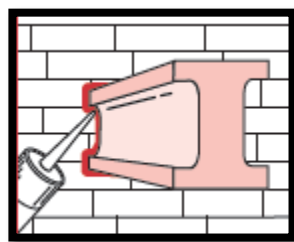


## TECHNICAL DATA

<b>Polymers and polymerisation system:</b>	<b>Intumescent sealant in water dispersion</b>
<b>Dichiarazione del prodotto:</b>	EN 15651-1: F-EXT-INT-7,5P
<b>Solid content:</b>	83%
<b>Application temperature:</b>	+5°C / +40°C
<b>Specific gravity:</b>	1,4 kg/dm <sup>3</sup>
<b>Service temperature:</b>	-25°C / +80°C
<b>Movement accomodation:</b>	7,5%
<b>Skin formation (20°C/50% U. R.):</b>	10 - 15 minuti
<b>Tack free time (20°C/50% U. R.):</b>	60 - 90 minuti

Values given in this table must not be considered as specifications.



## PRODUCT DESCRIPTION

**INTUSEAL** is a water based fire resistant sealant. After application it turns to an elastoplastic, overpaintable product with excellent adhesion to many building materials. In case of fire it swells creating a smoke and fire tight seal.

**It is suitable for application regulated in the field of fire resistance up to EI 240.**

Tested according to the standard **UNI EN 1366-4** and rated in accordance with the procedures of the standard **UNI EN 13501-2** after tests carried out at CSI in Bollate.

Classification report N° **CSI1920 FR** available upon request.

## PRODUCT CHARACTERISTICS AND USES

- **Intumescent:** it swells when exposed to high temperatures
- **Consistency:** non slumping soft paste
- **Fire resistance:** up to EI 240 in joints properly constructed and sized

## PROFESSIONAL USES

- Sealing of linear joints subject to fire regulations on masonry and concrete substrates.
- Joints between windows and firebreak doors and walls surrounding.
- For fire resistant sealing of partition walls.
- For assembling fire-resisting panels.

- For sealing service penetrations through walls and pipes, cables ventilation ducts.

## METHOD OF USE

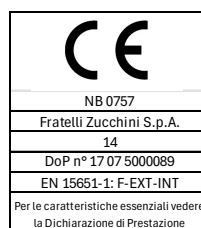
**Surface preparation:** the surface must be dry and clean, free from dust and grease. Onto porous substrates like concrete, plaster, a primer obtained diluting Intuseal with water (ratio 1:1 or 1:2) can be used.

**Joint dimension:** the joint width must be at least 10 mm and a maximum of 40 mm. In the joints of width less than 20 mm the depth should not exceed the width. Over 20 mm the width should be about twice the depth. The depth can be adjusted including a proper filling material.

**Application:** apply the sealant by a gun and practise a suitable pressure against the sides. Tooling can be done by a wet pool.

## APPROVALS

**EN 15651-1: F-EXT-INT-7,5P Sealant for façade for interior and exterior application.**



**Criteria for the construction of the joint according to fire resistance requirements:**

The test report N ° FR CSI 1920, available on request, defines the combinations of performance parameters that lead to the

**Fratelli Zucchini S.p.A.**

Via C. Colombo, 6  
44124 Ferrara - Italy

Tel. +39 0532 782711 - info@zucchini.it - www.zucchini.it

COMPANY WITH  
QUALITY SYSTEM  
CERTIFIED BY DNV GL  
ISO 9001



classification of joints (horizontal and vertical, single and double) on a concrete wall with a thickness of 200 mm.

Joint width	Orientation of the joint	EI	E	Additional classes
40	horizontal	240	240	T- X-W 40
40	horizontal	240	240	T- X-W 40
30	horizontal	240	240	T- X-W 30
20	horizontal	240	240	T- X-W 20
10	horizontal	240	240	T- X-W 10
40	horizontal	240	240	T- X-W 40
40	horizontal	240	240	T- X-W 40
30	horizontal	240	240	T- X-W 30
20	horizontal	180	240	T- X-W 30
10	horizontal	240	240	T- X-W 10
40	vertical	240	240	V- X-W 40
40	vertical	240	240	V- X-W 40
30	vertical	240	240	V- X-W 30
20	vertical	240	240	V- X-W 20
10	vertical	180	180	V- X-W 10
10	vertical	240	240	V- X-W 10
20	vertical	240	240	V- X-W 20
30	vertical	180	180	V- X-W 30
40	vertical	240	240	V- X-W 40
40	vertical	240	240	V- X-W 40

- T: vertical supporting construction / horizontal joint
- V: horizontal supporting construction / vertical joint
- X: movement is not applied
- W: range of joint width (mm)

## SAFETY AND HEALTH

See safety data sheet.

## STORAGE STABILITY

12 months from the date of production in the original sealed container; in a dry place at a temperature range of +5°C/+25°C.

**Protect from frost.**

## PACKAGING

Code	Colour	Packaging	Pcs./box
1005357	Grigio	cartuccia 310 ml.	24
1005363	Grigio	Sacchetto 600 ml	12

Other sizes available on request

